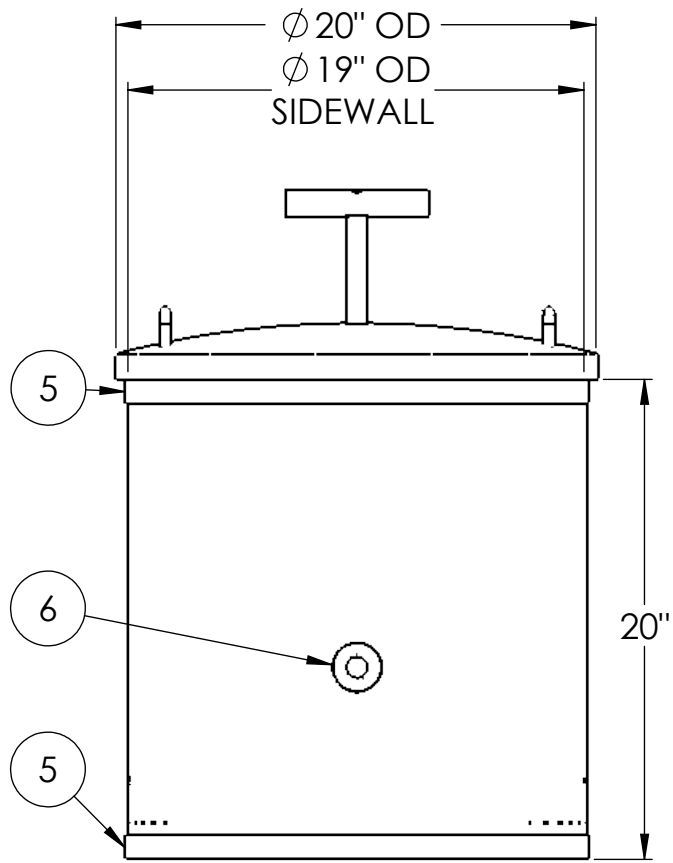
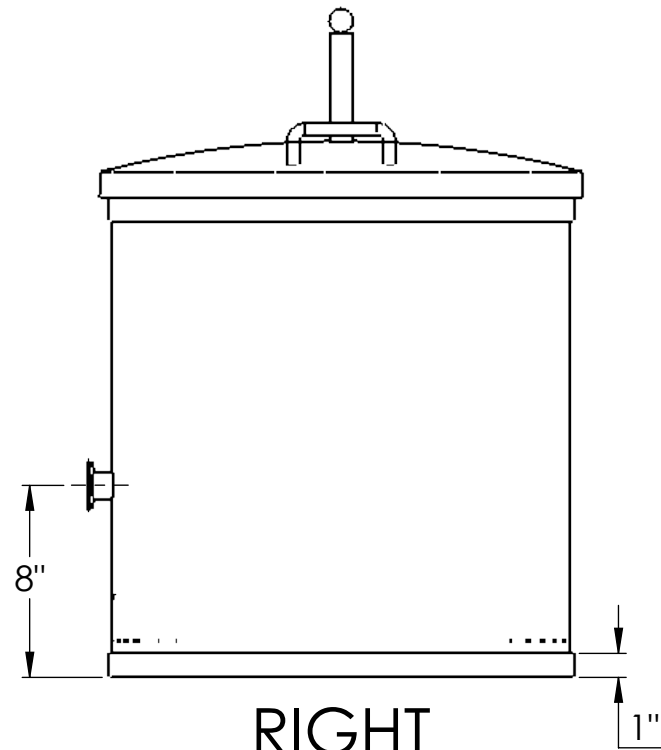


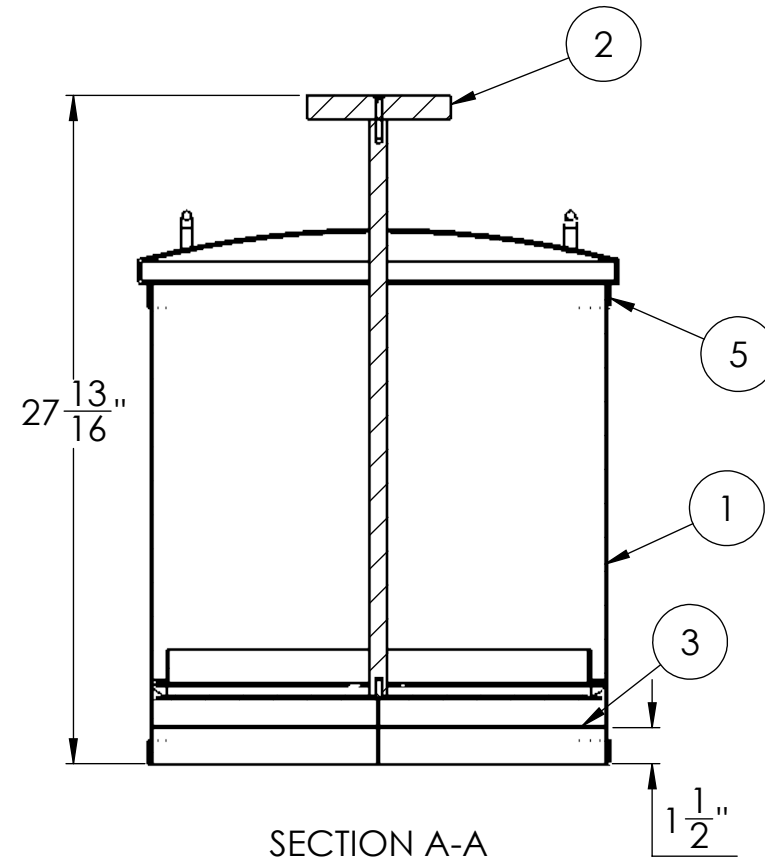
ITEM NO.	PART NUMBER	REV	DESCRIPTION	QTY.	KITTED	DATE	INITIALS	P.O.
1	M01179	A	FRENCH PRESS BODY SHEET METAL 20"X 66", 16GA #4	1				
2	P00832	A	FRENCH PRESS	1				
3	M01183	A	18.875" OD BOTTOM FRENCH PRESS HEAD, 16GA 2B	1				
	T50517	A	FRENCH PRESS TANK HEAD ASSEMBLY	1				
5	T80159	A	EASYWAY 19.5" ID (1"X1/8")	2				
6	S10003	A	TC FERRULE, 1"X28MM	1				



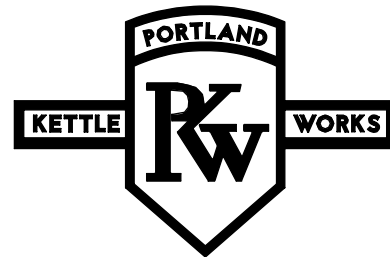
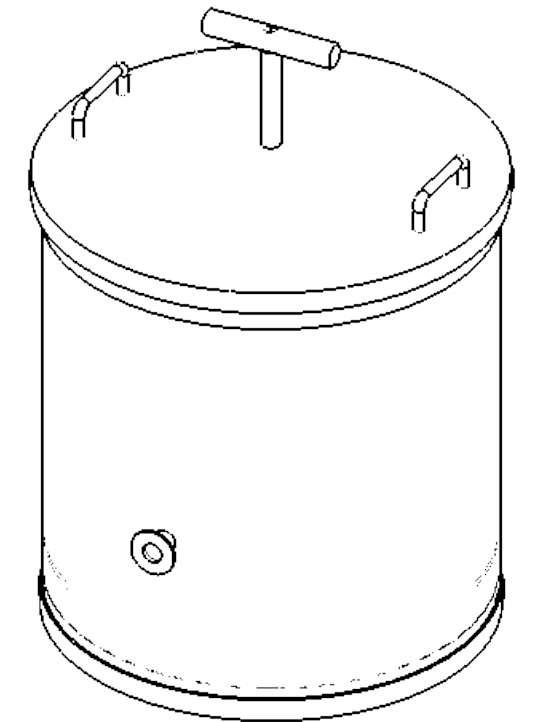
FRONT



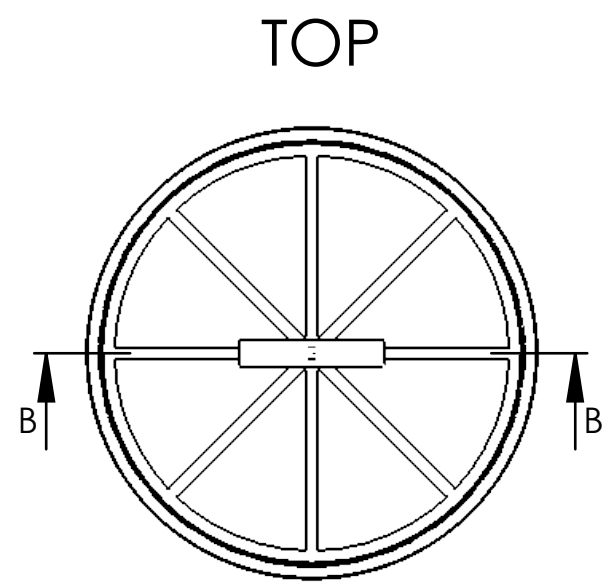
RIGHT



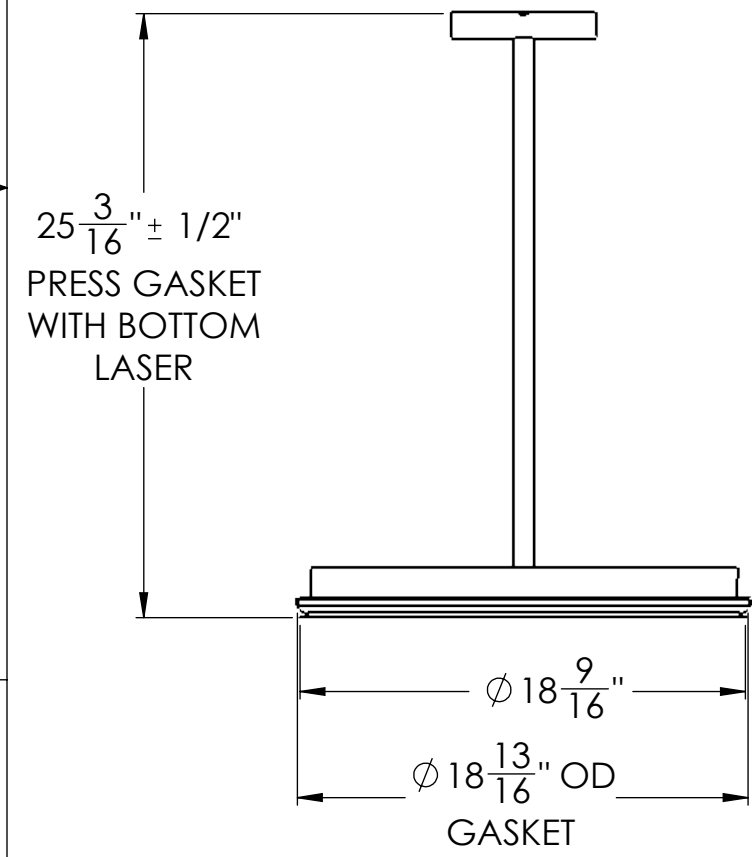
SECTION A-A



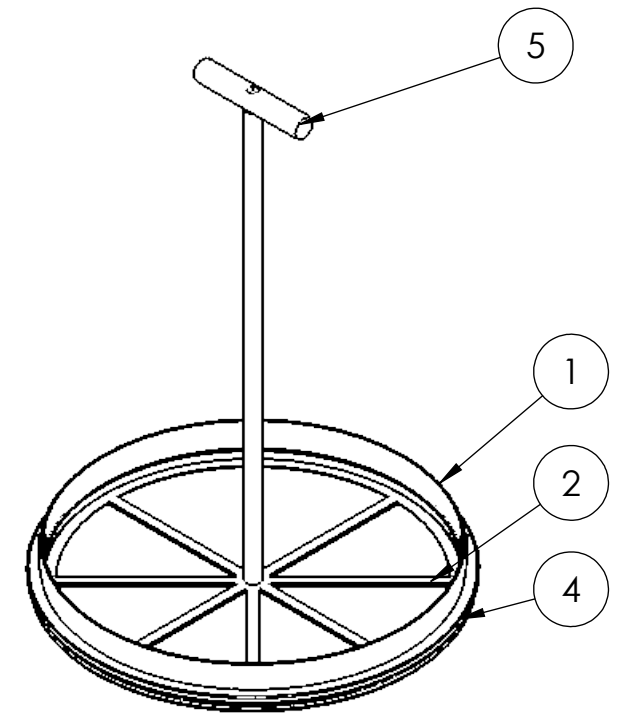
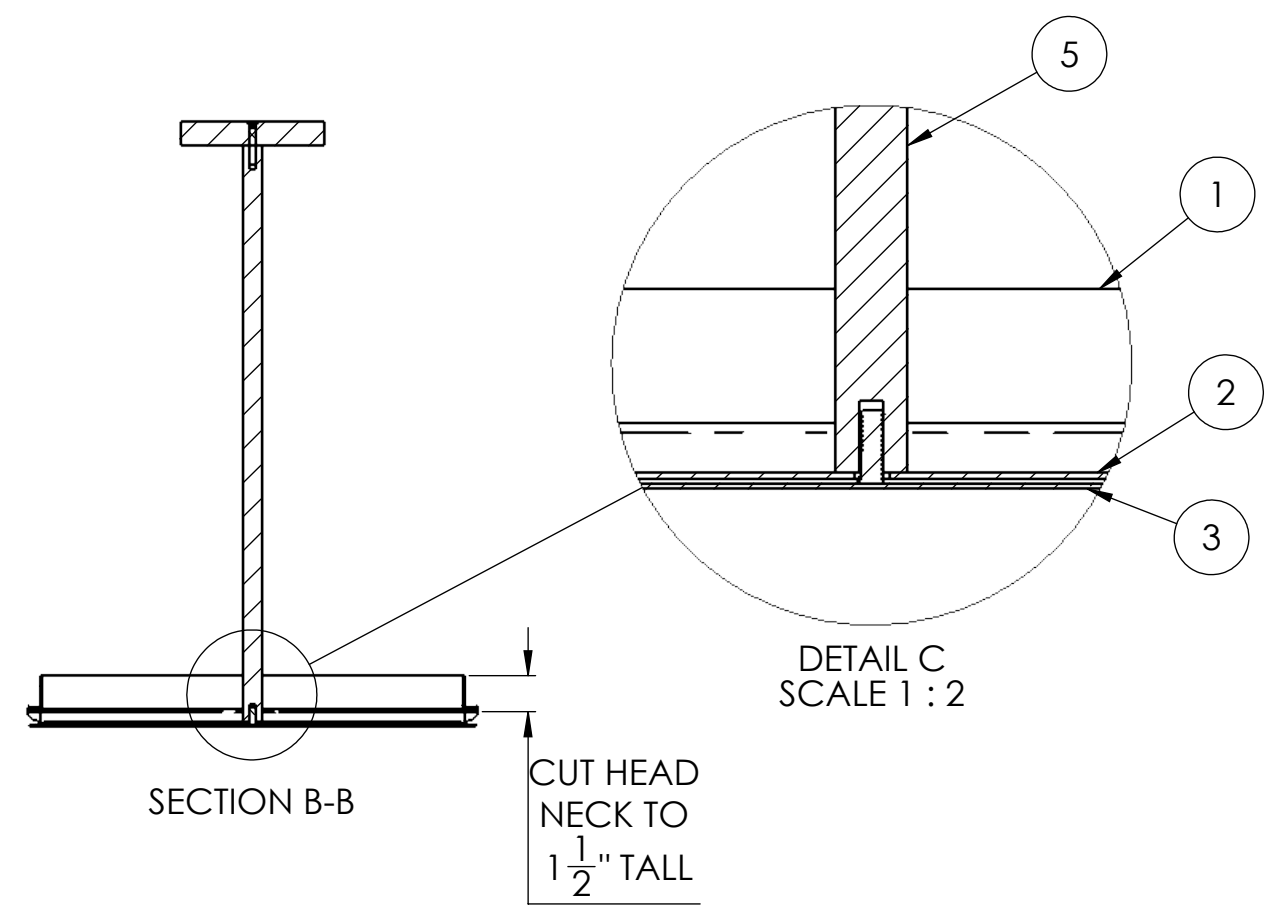
PORTLAND KETTLE WORKS			
DRAWN	NAME	DATE	UNLESS OTHERWISE SPECIFIED:
CHECKED	VH	4/9/2023	DIMENSIONS ARE IN INCHES
ENG APPR.			TOLERANCES:
MFG APPR.			FRACTIONAL: ± 1/8
Q.A.			ANGULAR: ± 1°
PROPRIETARY AND CONFIDENTIAL THE INFORMATION CONTAINED IN THIS DRAWING IS THE SOLE PROPERTY OF PORTLAND KETTLE WORKS. ANY REPRODUCTION IN PART OR AS A WHOLE WITHOUT THE WRITTEN PERMISSION OF PORTLAND KETTLE WORKS IS PROHIBITED.			INTERPRET GEOMETRIC TOLERANCING PER: ASME MATERIAL: SS304 FINISH: #4 DO NOT SCALE DRAWING
ASSEMBLY DESCRIPTION		ASSEMBLY NUMBER:	
FRENCH PRESS TANK ASSEMBLY		P00833	
ASSEMBLY REV:		ASSEMBLY REV:	
A		A	
SCALE: 1:8	WEIGHT:	SIZE: B	SHEET 1 OF 7



ITEM NO.	PART NUMBER	REV	DESCRIPTION	QTY.	KITTED	DATE	INITIALS	P.O.
1	S40205	A	NON-PRESSURIZED STAINLESS TOP MANWAY NECK ONLY, 18" ROUND, CUT TO 1.5" TALL	1				
2	M01178	A	17 7/16" (17.4375IN) OD TOP CROSS FRENCH PRESS PLATE	1				
3	P00834	A	18 9/16" OD BOTTOM FRENCH PRESS PLATE ASSEMBLY	1				
4	S10404	A	18" (457 mm) TOP MANWAY NON-PRESSURE GASKET	1				
5	P00836	A	FRENCH PRESS PLUNGER ASSEMBLY	1				



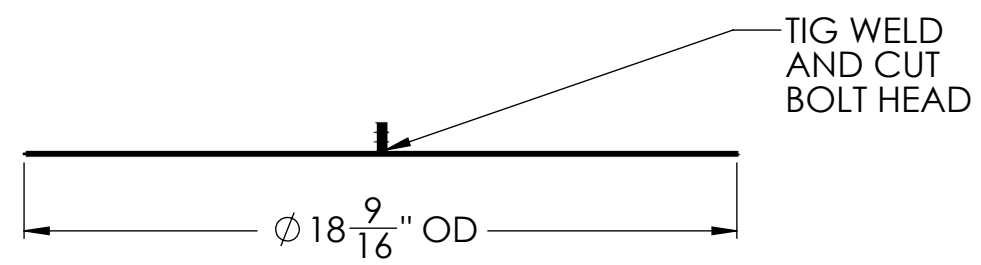
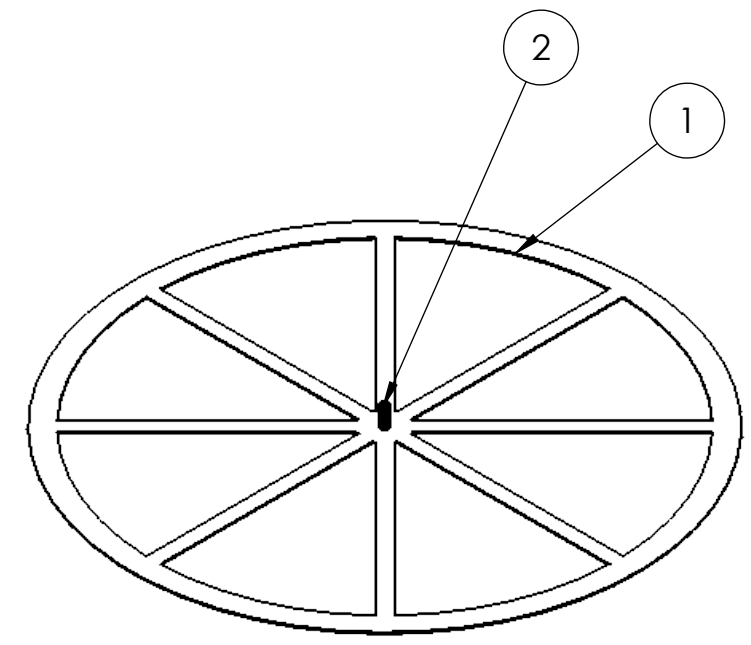
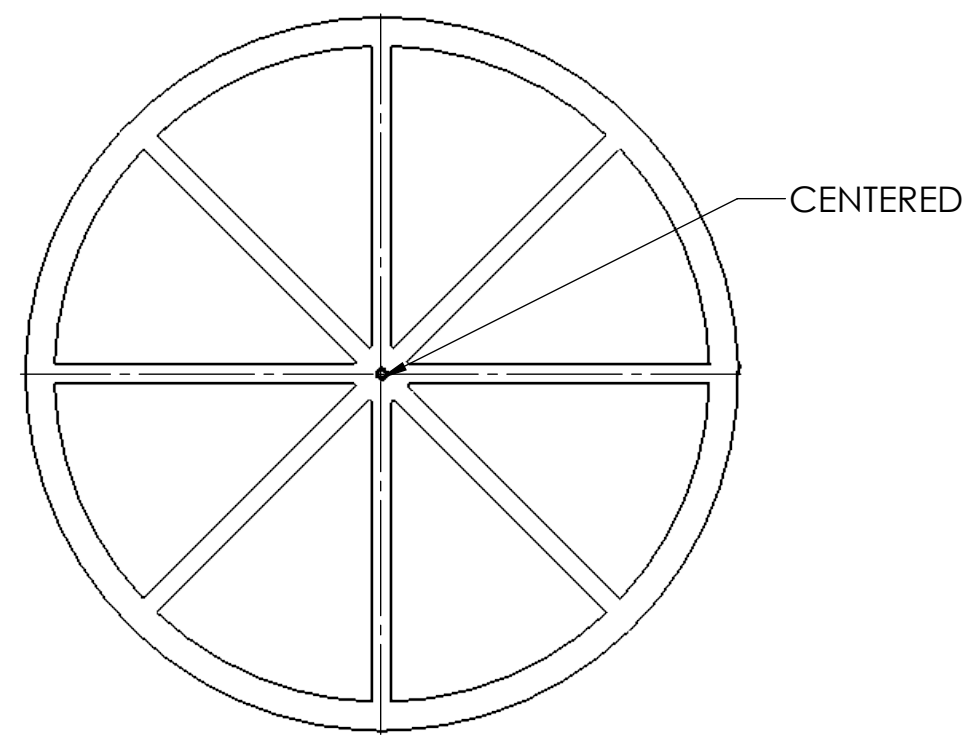
FRONT



PORTLAND KETTLE WORKS			
DRAWN	NAME	DATE	UNLESS OTHERWISE SPECIFIED:
CHECKED	VH	4/9/2023	DIMENSIONS ARE IN INCHES
ENG APPR.			TOLERANCES:
MFG APPR.			FRACTIONAL: \pm 1/8
Q.A.			ANGULAR: \pm 1°
PROPRIETARY AND CONFIDENTIAL THE INFORMATION CONTAINED IN THIS DRAWING IS THE SOLE PROPERTY OF PORTLAND KETTLE WORKS. ANY REPRODUCTION IN PART OR AS A WHOLE WITHOUT THE WRITTEN PERMISSION OF PORTLAND KETTLE WORKS IS PROHIBITED.			INTERPRET GEOMETRIC TOLERANCING PER: ASME MATERIAL: SS304 FINISH: 2B DO NOT SCALE DRAWING
PART DESCRIPTION		FRENCH PRESS	
PART NUMBER:		P00832	PART REV: A
ASSEMBLY DESCRIPTION			
FRENCH PRESS TANK ASSEMBLY			
ASSEMBLY NUMBER:		P00833	ASSEMBLY REV: A
SCALE: 1:8	WEIGHT:	SIZE: B	SHEET 2 OF 7

ITEM NO.	PART NUMBER	REV	DESCRIPTION	QTY.	KITTED	DATE	INITIALS	P.O.
1	M01177	A	18 9/16" (18.5625IN) OD BOTTOM CROSS FRENCH PRESS PLATE, 16GA 2B	1				
2	F10002	A	BOLT, 1/4"-20 X 3/4" 18-8 SS	1				

TOP



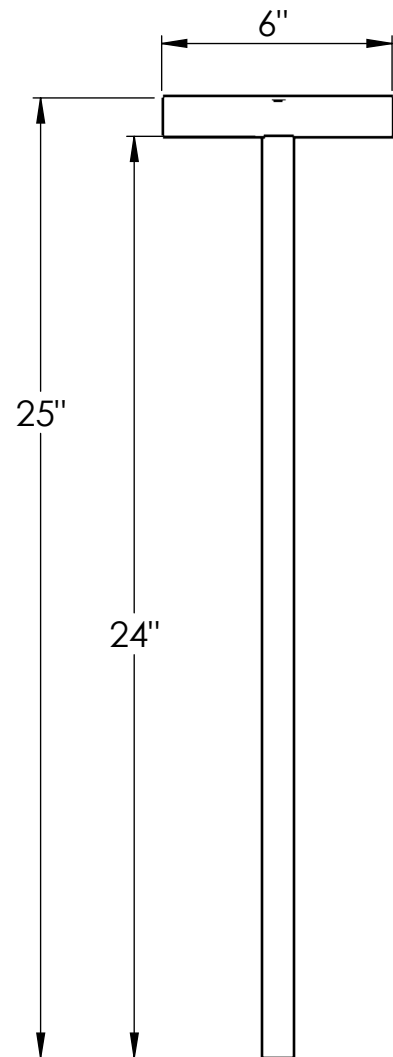
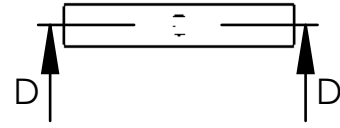
FRONT



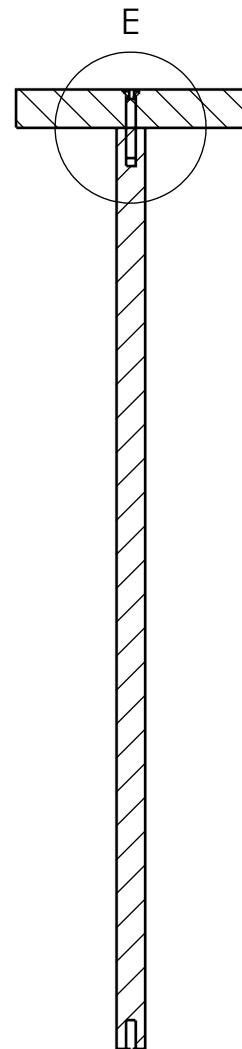
PORTLAND KETTLE WORKS			
DRAWN	NAME	DATE	UNLESS OTHERWISE SPECIFIED:
CHECKED	VH	4/9/2023	DIMENSIONS ARE IN INCHES
ENG APPR.			TOLERANCES:
MFG APPR.			FRACTIONAL: ± 1/8
Q.A.			ANGULAR: ± 1°
PROPRIETARY AND CONFIDENTIAL THE INFORMATION CONTAINED IN THIS DRAWING IS THE SOLE PROPERTY OF PORTLAND KETTLE WORKS. ANY REPRODUCTION IN PART OR AS A WHOLE WITHOUT THE WRITTEN PERMISSION OF PORTLAND KETTLE WORKS IS PROHIBITED.			INTERPRET GEOMETRIC TOLERANCING PER: ASME MATERIAL: SS304 FINISH: 2B DO NOT SCALE DRAWING
PART DESCRIPTION		18 9/16" OD BOTTOM FRENCH PRESS PLATE ASSEMBLY	
PART NUMBER:		P00834	PART REV: A
ASSEMBLY DESCRIPTION			
FRENCH PRESS			
ASSEMBLY NUMBER:		P00832	ASSEMBLY REV: A
SCALE: 1:20		WEIGHT:	
SIZE: B		SHEET 3 OF 7	

ITEM NO.	PART NUMBER	REV	DESCRIPTION	QTY.	KITTED	DATE	INITIALS	P.O.
1	P00843	A	FRENCH PRESS PLUNGER VERTICAL PART, S50040 (ROUND BAR, 3/4")	1				
2	P00844	A	FRENCH PRESS PLUNGER HANDLE PART, S50038 (ROUND BAR 1/2")	1				
3	F10081	A	1/4"-13 x 1-3/4" Flat Head Cap Screw Stainless Steel 304 (ASME B18.3)	1				

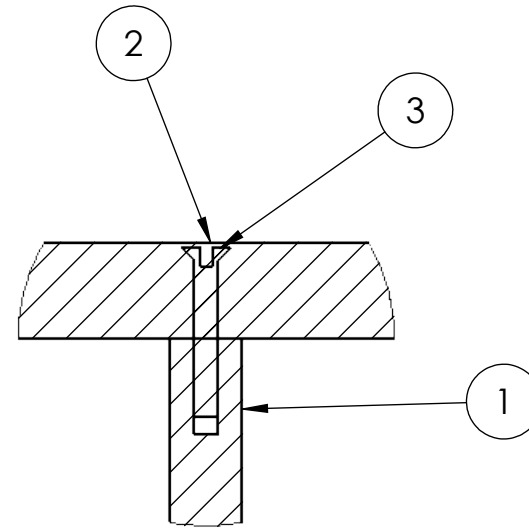
TOP



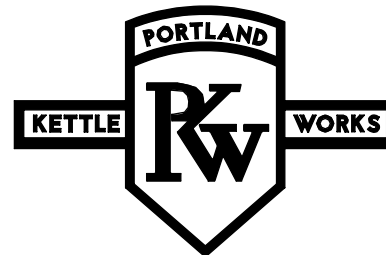
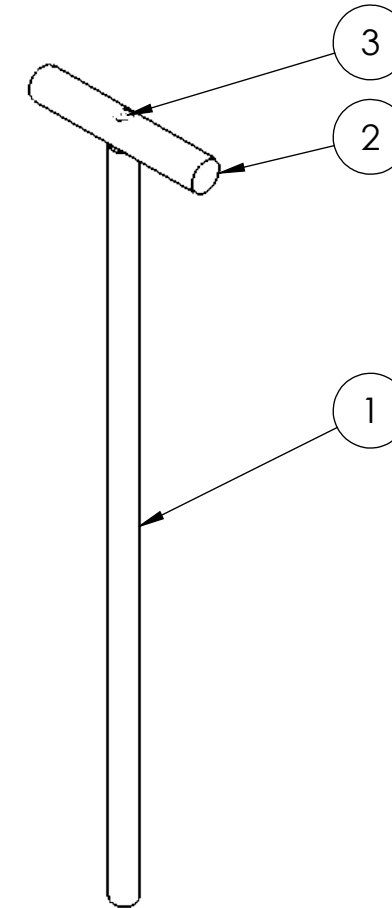
FRONT



SECTION D-D

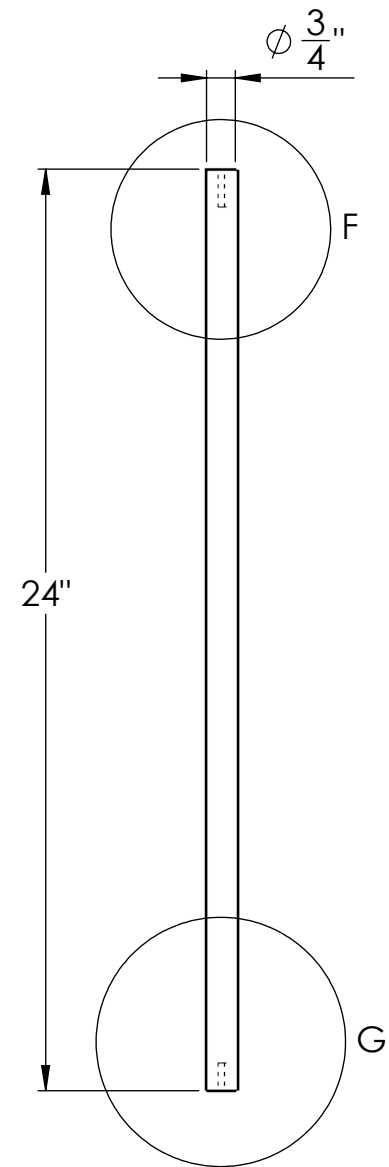


DETAIL E
SCALE 1 : 2



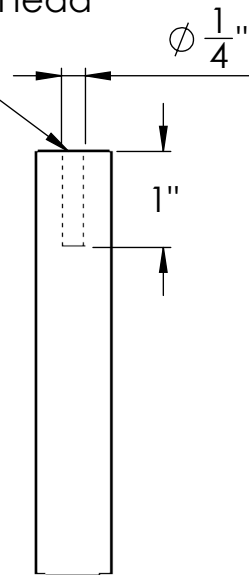
PORTLAND KETTLE WORKS

<table border="1"> <tr> <td>DRAWN</td> <td>VH</td> <td>DATE</td> <td>4/9/2023</td> </tr> <tr> <td>CHECKED</td> <td></td> <td></td> <td></td> </tr> <tr> <td>ENG APPR.</td> <td></td> <td></td> <td></td> </tr> <tr> <td>MFG APPR.</td> <td></td> <td></td> <td></td> </tr> <tr> <td>Q.A.</td> <td></td> <td></td> <td></td> </tr> </table>	DRAWN	VH	DATE	4/9/2023	CHECKED				ENG APPR.				MFG APPR.				Q.A.				<p>UNLESS OTHERWISE SPECIFIED:</p> <p>DIMENSIONS ARE IN INCHES</p> <p>TOLERANCES:</p> <p>FRACTIONAL: ± 1/8</p> <p>ANGULAR: ± 1°</p> <p>TWO PLACE DECIMAL: ± 0.01</p> <p>THREE PLACE DECIMAL: ± 0.005</p>	<p>INTERPRET GEOMETRIC TOLERANCING PER: ASME</p> <p>MATERIAL: SS304</p> <p>FINISH: 2B</p> <p>DO NOT SCALE DRAWING</p>	<p>PART DESCRIPTION FRENCH PRESS PLUNGER ASSEMBLY</p> <p>PART NUMBER: P00836 PART REV: A</p> <p>ASSEMBLY DESCRIPTION FRENCH PRESS</p> <p>ASSEMBLY NUMBER: P00832 ASSEMBLY REV: A</p>
DRAWN	VH	DATE	4/9/2023																				
CHECKED																							
ENG APPR.																							
MFG APPR.																							
Q.A.																							
<p>PROPRIETARY AND CONFIDENTIAL</p> <p>THE INFORMATION CONTAINED IN THIS DRAWING IS THE SOLE PROPERTY OF PORTLAND KETTLE WORKS. ANY REPRODUCTION IN PART OR AS A WHOLE WITHOUT THE WRITTEN PERMISSION OF PORTLAND KETTLE WORKS IS PROHIBITED.</p>		<p>SCALE: 1:5</p>	<p>WEIGHT:</p>																				
		<p>SIZE: B</p>	<p>SHEET 4 OF 7</p>																				



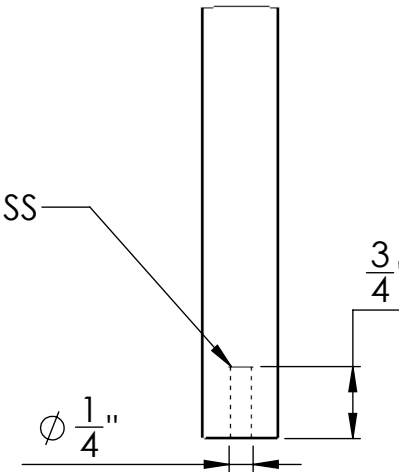
FRONT

THREAD FOR
1/4"-13 x 1-3/4" Flat Head
Cap Screw

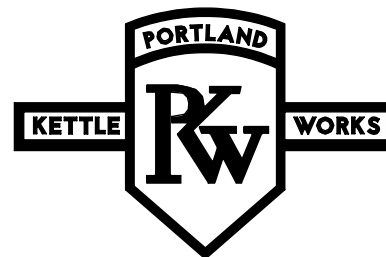


DETAIL F
SCALE 1 : 2

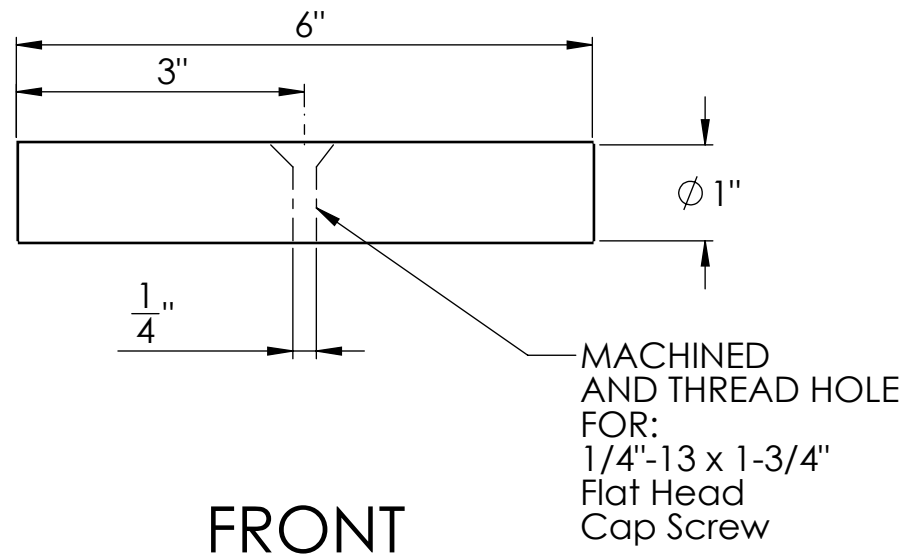
THREAD FOR
Bolt, 1/4"-20 x 3/4" 18-8 SS



DETAIL G
SCALE 1 : 2



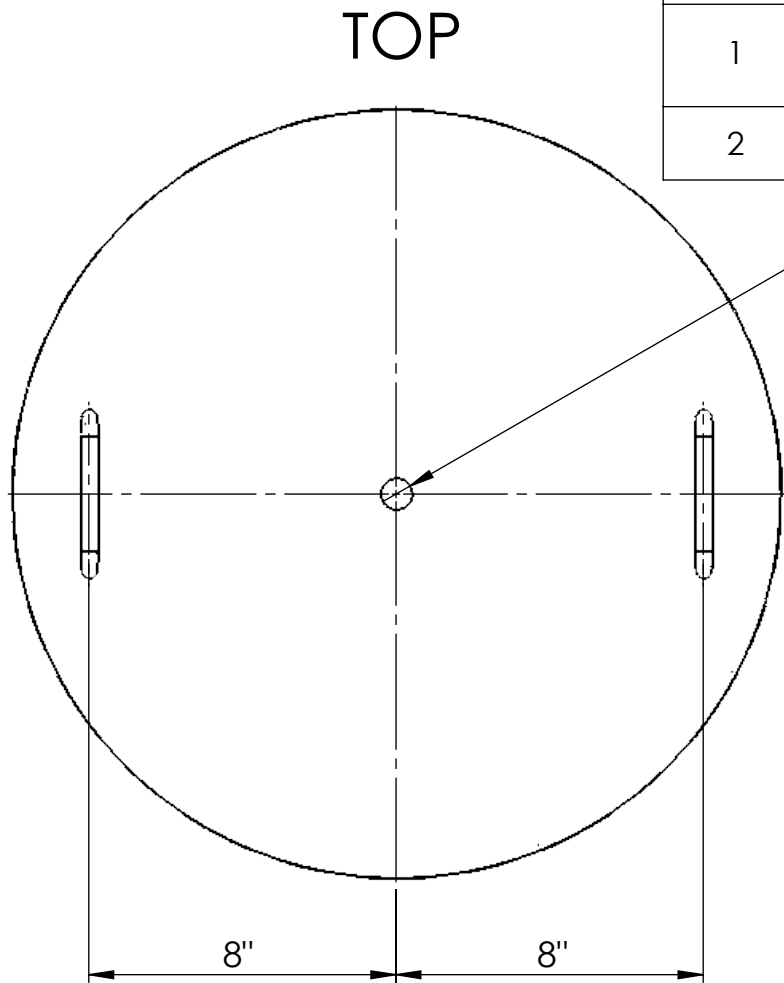
PORTLAND KETTLE WORKS			
DRAWN	NAME	DATE	UNLESS OTHERWISE SPECIFIED:
CHECKED	VH	4/9/2023	DIMENSIONS ARE IN INCHES
ENG APPR.			TOLERANCES:
MFG APPR.			FRACTIONAL: ± 1/8
Q.A.			ANGULAR: ± 1°
PROPRIETARY AND CONFIDENTIAL THE INFORMATION CONTAINED IN THIS DRAWING IS THE SOLE PROPERTY OF PORTLAND KETTLE WORKS. ANY REPRODUCTION IN PART OR AS A WHOLE WITHOUT THE WRITTEN PERMISSION OF PORTLAND KETTLE WORKS IS PROHIBITED.			INTERPRET GEOMETRIC TOLERANCING PER: ASME MATERIAL: SS304 FINISH: 2B DO NOT SCALE DRAWING
PART DESCRIPTION		FRENCH PRESS PLUNGER VERTICAL	
PART, S50040 (ROUND BAR, 3/4")		PART NUMBER: P00843	
ASSEMBLY DESCRIPTION		FRENCH PRESS PLUNGER ASSEMBLY	
ASSEMBLY NUMBER: P00836		ASSEMBLY REV: A	
SCALE: 1:20	WEIGHT:	SIZE: B	SHEET 5 OF 7



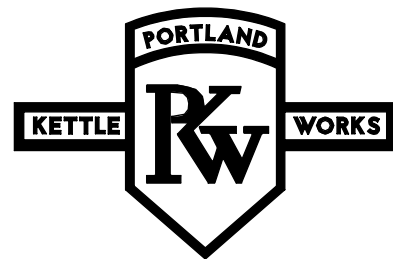
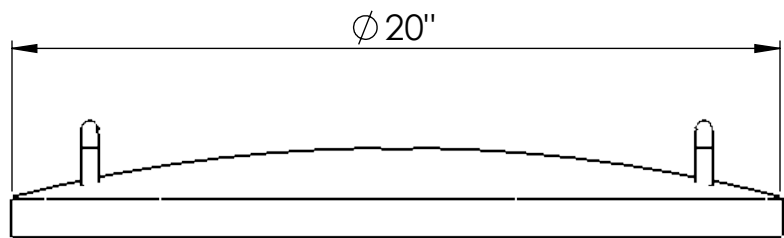
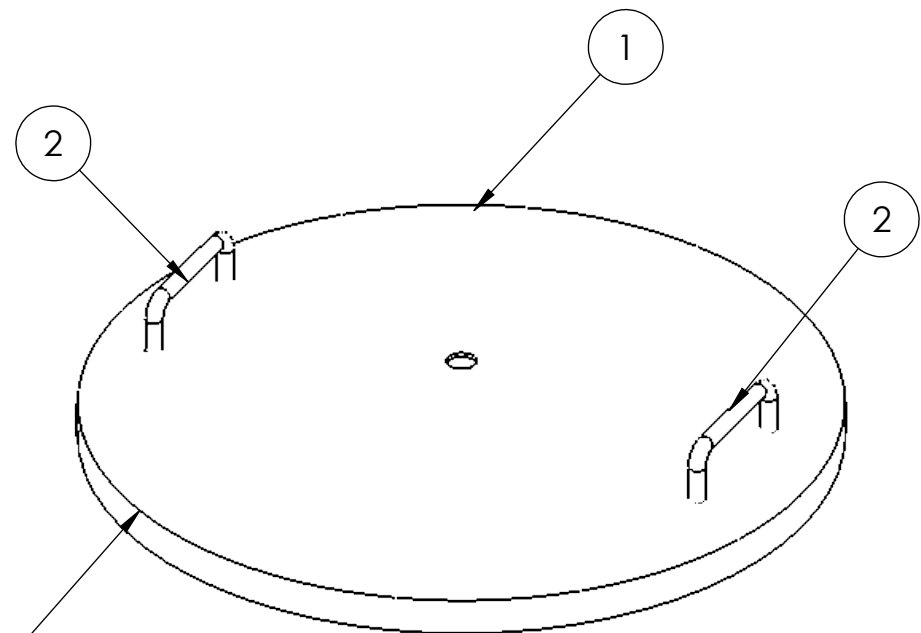
PORTLAND KETTLE WORKS

	NAME	DATE	UNLESS OTHERWISE SPECIFIED:		PART DESCRIPTION
DRAWN	VH	4/9/2023	DIMENSIONS ARE IN INCHES		FRENCH PRESS PLUNGER HANDLE
CHECKED			TOLERANCES:		PART, S50038 (ROUND BAR 1/2")
ENG APPR.			FRACTIONAL: $\pm 1/8$	INTERPRET GEOMETRIC TOLERANCING PER: ASME	PART NUMBER: P00844
MFG APPR.			ANGULAR: $\pm 1^\circ$	MATERIAL: SS304	PART REV: A
Q.A.			TWO PLACE DECIMAL: ± 0.01	FINISH: 2B	ASSEMBLY DESCRIPTION
PROPRIETARY AND CONFIDENTIAL THE INFORMATION CONTAINED IN THIS DRAWING IS THE SOLE PROPERTY OF PORTLAND KETTLE WORKS. ANY REPRODUCTION IN PART OR AS A WHOLE WITHOUT THE WRITTEN PERMISSION OF PORTLAND KETTLE WORKS IS PROHIBITED.			THREE PLACE DECIMAL: ± 0.005	DO NOT SCALE DRAWING	FRENCH PRESS PLUNGER ASSEMBLY
			SCALE: 1:2	WEIGHT:	ASSEMBLY NUMBER: P00836
					SIZE: B SHEET 6 OF 7

ITEM NO.	PART NUMBER	REV	DESCRIPTION	QTY.	KITTED	DATE	INITIALS	P.O.
1	S40206	A	Non-Pressurized Stainless Top Manway Lid Only, 18" Round	1				
2	P00204	A	3/8" ROUND HANDLE	2				



$\phi \frac{13}{16}''$ HOLE ∇ ALL



PORTLAND KETTLE WORKS

NAME	DATE	UNLESS OTHERWISE SPECIFIED:		PART DESCRIPTION	
DRAWN: VH	4/9/2023	DIMENSIONS ARE IN INCHES	INTERPRET GEOMETRIC TOLERANCING PER: ASME	FRENCH PRESS PLUNGER HANDLE	
CHECKED:		TOLERANCES:	MATERIAL: SS304	PART NUMBER: T50517	PART REV: A
ENG APPR.:		FRACTIONAL: $\pm 1/8$	FINISH: 2B	ASSEMBLY DESCRIPTION: FRENCH PRESS ASSEMBLY	
MFG APPR.:		ANGULAR: $\pm 1^\circ$	DO NOT SCALE DRAWING	ASSEMBLY NUMBER: P00833	ASSEMBLY REV: A
Q.A.:		TWO PLACE DECIMAL: ± 0.01			
PROPRIETARY AND CONFIDENTIAL THE INFORMATION CONTAINED IN THIS DRAWING IS THE SOLE PROPERTY OF PORTLAND KETTLE WORKS. ANY REPRODUCTION IN PART OR AS A WHOLE WITHOUT THE WRITTEN PERMISSION OF PORTLAND KETTLE WORKS IS PROHIBITED.		THREE PLACE DECIMAL: ± 0.005			
		SCALE: 1:2	WEIGHT:	SIZE: B	SHEET 7 OF 7